



Waitoki School Powers On.....

Waitoki School has a long history of being the hub of the village. From the days when it used to host the region's tennis court to current day when many gather in Summer to cool down in the school pool.

Usually these gatherings centre around school events but occasionally the school has found itself the hub of the community for other reasons. Last year the school made its facilities available for families who had been affected by storms and some were without power for weeks. With the recent events in Christchurch, there has also been a recognition that schools become a focal point for Communities - a place of refuge, a place of security. Being a rural school, Waitoki depends on a constant supply of electricity to remain open. If we are without power, the school's pumps no longer work and we are unable to provide fresh running water or operating toilets for our student body and staff - in these instances the school must close.

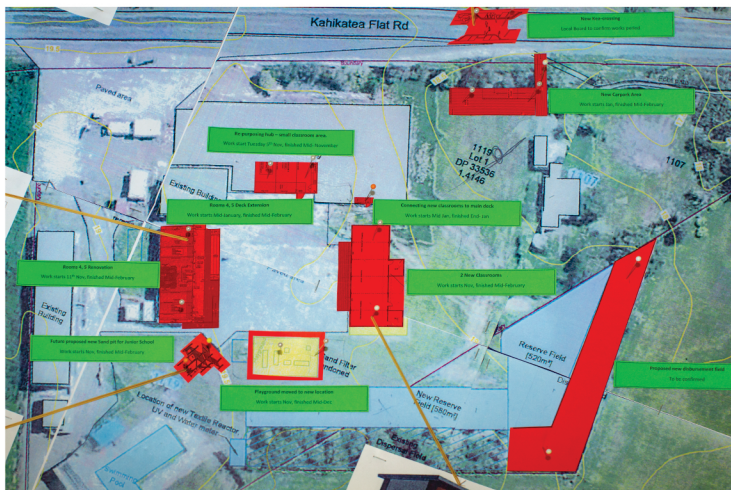
This will now be a thing of the past thanks to our friends at the Masonic Lodge Orewa #370 and The Freemason's Foundation. The Freemasons have sponsored the school's purchase of a 7 kva Honda generator which means in time of need Waitoki school will remain open and continue to be of service to our children and community. The project was also supported by Gatman's Outdoor and Lifestyle in Silverdale by supplying the generator at a discounted price.

The purchase of this new generator will also help our school and the fundraising team move further afield when raising money for our school and educating the children, by providing electricity beyond the school gates for pop up cafes, school camps etc.

A massive thanks to the Freemasons and brethren of the Masonic Lodge Orewa #370 for their generous support.

Work goes on at Waitoki School

In its long history, Waitoki School has seen significant growth. The recent growth in our school roll means we are out of space at Waitoki School. The Ministry of Education's expectation is that a school will operate at 100% capacity. Waitoki School has been operating at 128% for at least 2 years. In response Senior Management and the Board of Trustees and have been working with the Ministry of Education to find solutions. Last week these solutions began to be realised.



Over the next several months', the school will be undertaking significant repurposing refurbishing projects and adding two new classrooms. As a result the almost 20 year old playground will be moved (and receive a bit of an upgrade) These projects are expected to be finished for term 1 2020.

We are also constantly working on how to make pick up and drop offs at the school safer not only for our school families but for the community. We're pleased to announce the creation of another small car park at the school and are working with the Rodney Council to install a Kea Crossing out the front of the school.

As well as these Ministry Projects our school community has been instrumental in repurposing a large storage shed into an amazing art space/classroom, upgrading our lamb daycare and introducing chickens and an amazing chicken coop to the school.

Don't worry our school pool will be available to the community (keys on sale now) but some of our fields may not be.

A big thank you to our school whanau and our wider community as we work to create an even more amazing place for our kids.



2020 SCULPTURE EXHIBITION – GRAND OPENING

Sunday 1st December 1.00pm to 4.00pm

A key attraction of the Kaipara Coast Plant Centre is our beautiful Sculpture Gardens and each year the 40 sculptures, created by local and overseas artists, are replaced in December.

The objective of the exhibition is to offer a series of visually stimulating and diverse artworks so as to generate an array of human responses in a fun and interactive environment.

Some of the artists will be available to discuss their works and pieces are also for sale if something really takes your fancy.

The opening presentations, including



comment by this year's curator Shea O'Neill, will be at 1.30pm with light finger food and soft drinks provided. Plus Ben Bradley, a very talented local musician, will be providing the music for the event. Each piece is displayed along the 1.2 Km nature trail set in the lovely Kaipara countryside and placed so as to blend sympathetically with its surrounding environment

This is a great way for all the family to spend a fun and relaxing afternoon as we also have an extensive kids play area within the gardens.

There is also our cute little coffee shop on site plus of course the Plant Centre for you to browse through (including our recently opened veggie section). Our knowledgeable and friendly staff will also be on hand to help with any garden related questions.

* Please note: Trail not suitable for wheelchairs or walking frames.

Venue location: 1481 Kaipara Coast Highway

Tickets: Adult \$15 per person

Children 5-13yrs \$7.50 (under 5's free)

Family's 2 adults + 3 children \$35

Groups 10+ \$10

To Book: info@kaiparacoast.co.nz OR Phone: 09 420 5655

Local Board Update from Phelan Pirrie



Phelan's Local Board update – November 2019

It is a huge honour to have been elected Chair of the Rodney Local Board at our swearing-in meeting in early November. Last terms' Chair, Beth Houlbrooke, has been a tireless cheerleader for Rodney. She developed an excellent working relationship with the Mayor and Councillors, staff and management and most of all with the Board. Beth has most importantly ensured we maintained a focus on delivering our three-year plan, and worked with the Board to form a consensus on our goals, clearly demonstrated by the fact that in three years only three votes weren't unanimous.

I am encouraged to see that the Mayor intends to take a hard look at Council Controlled Organisations (CCO's). Auckland Transport is a source of frustration for many in Rodney. There are some great staff in that organisation who are as frustrated as I am with the mixed results. In a democracy, you cannot have an organisation spending billions of ratepayers dollars that appears not to communicate, engage or be accountable to the community that funds its activities.

It is now almost two years since the Local Government Commission released its report on the North Rodney breakaway application. We have yet to see meaningful progress on the recommendations which included better engagement and communication; Local Board offices in Rodney so our community has better access to our meetings and Board members; and a balancing of the funding inequalities we have compared to other parts of Auckland due to Rodney District Council constrained ability to fund facilities. I would like to see these recommendations need to be acted upon over the next twelve months.



Over the last five years, the population in Rodney has grown by over 10,000 making us the second-fastest growing ward in Auckland. This growth is set to continue. The Local Board must ensure we are focused on meeting the needs of our growing towns while not neglecting our rural residents, this requires thoughtful balancing.

I look forward to continuing the excellent work of our previous Chair and the Local Board to maintain productive relationships, consensus and a focus on delivering results for all Rodney residents.

Your Local Board members are:

Phelan Pirrie. 021837167 phelan.pirrie@aucklandcouncil.govt.nz

Brent Bailey. 021730892 brent.bailey@aucklandcouncil.govt.nz

Danielle Hancock. 0211959826

danielle.hancock@aucklandcouncil.govt.nz

Vicki Kenny. 0276709968 vicki.kenny@aucklandcouncil.govt.nz



LAWN CARE

By Andrew Hall from Lifestyle Mowing Machinery

It's been a super busy year at Lifestyle Mowing Machinery. Thank you so much for your support of a local business. Donna and myself certainly try hard to provide the best service and support, for all small engines, that we can. This year we are closing 24th December and open again 6th January. It is extremely rare for us the have a summer holiday, so this year we are shouting ourselves some time to re-energise for the new 2020 year.

Tip: As a general rule of thumb all walk behind push mowers need an engine oil change every 25 hours of use. For the average lawn of 1 hours mowing every fortnight, that's a once a year exercise. Lifestyle Mowing Machinery wishes everyone a Merry Christmas and a Happy New Year.

“Don't Kick it- I'll Fix It”

If you have a small engine problem call the experts.

Andrew and Donna Hall 0274955948.

Lifestyle Mowing Machinery, 8 Stevens Lane, Waitoki

“We will put the fun back into mowing”



LIFESTYLE MOWING MACHINERY

We will put the fun back into mowing

* Quality brand mowers & ride ons

* Unparalleled service & Support

* Large Product range

Come in and see us today
8 Stevens Lane, Waitoki

Or

Call us on 0274 955 948

www.moadoc.co.nz



Waitōtara

Sustainable & Resilient Living

All I want for Christmas is heaps and heaps of mulch. Preferably aged bark to provide an insulation layer for the soil, to retain water and suppress weeds around my garden. I would quite like the Christmas elves to spread it out about 10 centimetres thick for me too. In the unlikely event that I haven't been good enough for Santa to grant my request this year, I think I should probably have a backup plan!

Any organic material can be used as mulch whether it is alive, fresh and green or dead and brown. The easiest way to provide a mulch cover is to plant densely. This can be achieved by planting a sea of comfrey in your orchard and filling any gaps in your vegetable and ornamental gardens. I like to intermingle root crop vegetables with leafy greens in the vegetable garden and cover bare soil with drought tolerant perennials or herbs in ornamental beds. Leave your lawn and paddocks to grow and if you absolutely must keep grass tidy, consider just mowing strips as pathways so that an un-mown space looks quite deliberate and meadow like.

None of this extra plant material needs to be permanent but does a great job of covering the soil now and giving you access to more compostable material at the end of summer. If you are still left with bare soil cover it with anything such as large shredded leaves, like canna or comfrey, branches from summer pruning and even your discarded Christmas tree!

Consider building a new compost pile in this space and include cardboard, newspaper and any weeds that have managed to sneak through your mulch covered paradise. I hope this helps reduce the need for watering and weeding over your holiday break! Waitōtara is open Mondays and the fourth Sunday of each month between 9 am and midday (excluding public and school holidays) for FREE advice and teaching. **We are closed for the Christmas holidays, re-opening on Monday 10th February.**

Contact Robyn on 09 421 1807
or email hello@waitotarasrl.education.
You can follow us on facebook/waitotarasrl



Melissa Lowe

NUTRITION & HEALTH COACH



Home-made Christmas Gift Jars

Looking for some creative (and budget friendly) gifts to give this year to friends and family? Then let me introduce you to The Gift Jar. Cute little jars, made by yourself to give to others. Much more personal and meaningful than just another generic box of chocolates.

Here are some ideas:

Treat food:

Make up a jar using just the dry ingredients for certain recipes (relatively healthy ones would be great). The dry ingredients for biscuits, muffins, bliss balls, muesli, pancake mix, and so on. Make sure you print out the contents and instructions on how to make the food and attach it to the jar and tie it up with a pretty ribbon.

Drinks:

Dry ingredients for hot chocolate mix, cappuccino mix etc, mini alcohol bottles.

Indulgence:

Bath salts infused with essential oils, a foot/body/face scrub or mask, pot pourri mix.

Pamper:

A jar containing mini pamper treats like lip balm, nail polish, nail file, bubble bath, shower gel, moisturiser etc.

Soups and spices:

Use dried beans, herbs etc for different types of soup. Fill a jar with spice and herb combinations for different foods, i.e. meat rubs for bbq etc.

Fun times:

Movie voucher with a few chocolate bars or voucher for popcorn added. Café or dinner voucher. Little notes of things that you like about that person that they can read each week or motivational notes or fun tasks that they can do each week (be nice!).

Summer time:

Mini sunscreen, lip balm, aloe vera, etc.

Kids:

Jar of lego figures, other figures that they may be interested in, balls of different coloured playdough, pencils, stickers, stencils etc.

And if all else fails – fill your jar with chocolates. Or wine. Always a successful option.

Happy Christmas everyone!

To lose weight, gain energy and balance your hormones, check out my programme at www.thethriveguide.co.nz



Property Maintenance, Residential Irrigation,
Heat Pump Servicing & Gutter Foam Installer

discount for
GOLD
CARD HOLDERS

Karl Greenland Owner Operator

Mob: 021 526 720 Email: karl@greenlandsolutions.co.nz